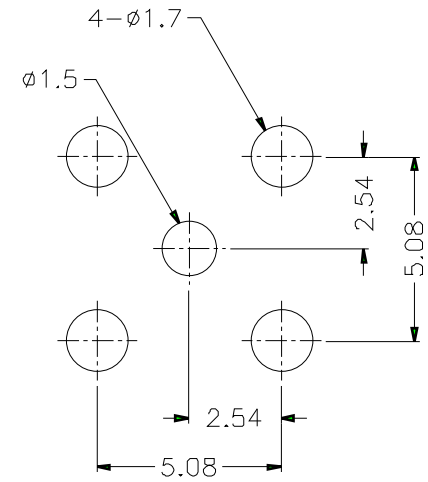
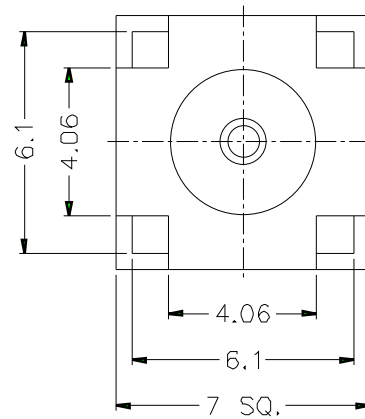
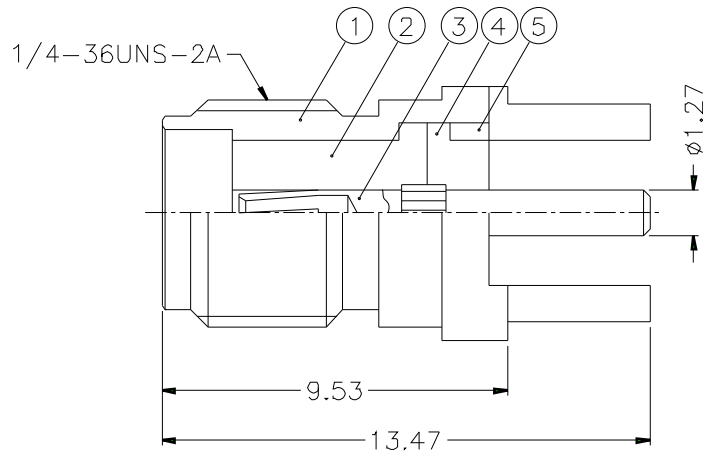


1		2		3		4		5		6		7		8	
REVISIONS															
ISS	ZONE	DESCRIPTION\PER REQUEST\DATE													



PCB MOUNTING HOLES

NOTES: FINISH (PLATING THICKNESS IN MICRO-INCHES)

1. BRASS PER QQ-B-626
2. GOLD PL. 3 MIN. THICK OVER NICKEL PL. 100 MIN. THICK OVER COPPER STRIKE
3. BERYLLIUM COPPER PER QQ-C-530
4. GOLD PL. 50 MIN. THICK OVER NICKEL PL. 100 MIN. THICK OVER COPPER STRIKE
5. TEFLON MIL-P-19468

DIMENSIONS ARE IN MILLIMETERS											PART NO. SMA6251A1-3GT50G-50		<h1>Amphenol</h1> <p>TITLE SMA P.C.B. JACK</p> <p>DRAWING NO. KJ-SMA6251A1-3GT50G-50</p> <p>ITEM NO.</p>					
UNLESS OTHERWISE SPECIFIED TOLERANCES											APPROVED						DATE	
0.5-6 = ±0.2																	10-11-01'	
6-30 = ±0.4																		
30-120 = ±0.6											CHECKED		DATE		10-11-01'			
120-315 = ±1											DRAWN		DATE		10-11-01'			
315-1000 = ±1.6																		
1000-2000 = ±2.4																		
5	RING	NOTE 1	NOTE 2	1	SMA7700-5-B	SCALE		5/1	ISSUE	A	FILE NO.							
4	INSULATOR	NOTE 5	NATURAL	1	SMA7700-4T-50													
3	CONTACT PIN	NOTE 3	NOTE 4	1	SMA7700-3													
2	INSULATOR	NOTE 5	NATURAL	1	SMA7530-2T-50-B													
1	BODY	NOTE 1	NOTE 2	1	SMA7700-1-B													

1	2	3	4	5	6	7	8
---	---	---	---	---	---	---	---